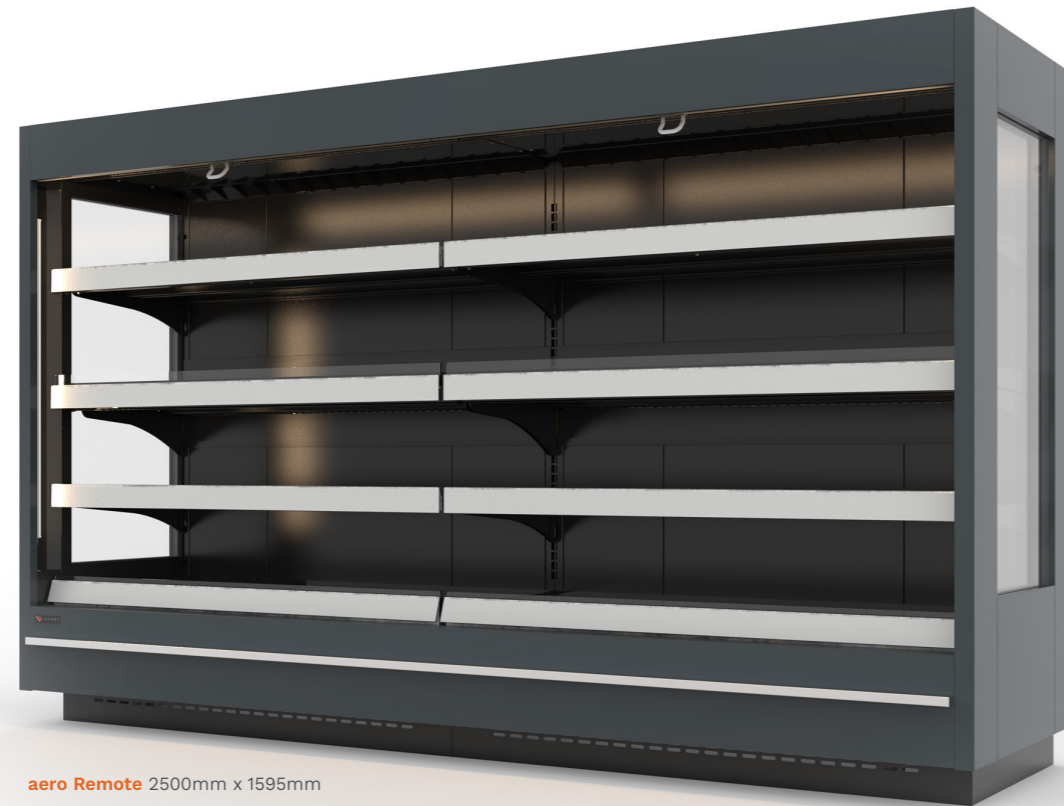




Cooling Duty  
**1150W** per/M  
@ -5 \*R449A



aero Remote 2500mm x 1595mm

aero

# Remote 750mm deep

Powered by  
**Aircell**

**Refrigerant**  
Wide selection of refrigerants available

**Temp. class/range**  
3M1 (-1 ÷ +5°C)

**Climate Class**  
3 (25°C, 60% RH)

## Specification

- / Remote cabinet
- / Aircell patented ventilation system
- / Manual nightblind
- / Adjustable shelving\*
  - / 3 Tier plus base (1595mm high)
  - / 4 Tier plus base (2020mm high)
  - / 5 Tier plus base (2250mm high)
- / POS price rails
- / Perspex risers
- / Electronic controller
- / Horizontal LED canopy lighting
- / EC evaporator fans
- / Expansion valve
- / Off cycle defrost
- / Multiplexable

\*Aircell shelves can move one position upwards or downwards.

## Options & Accessories

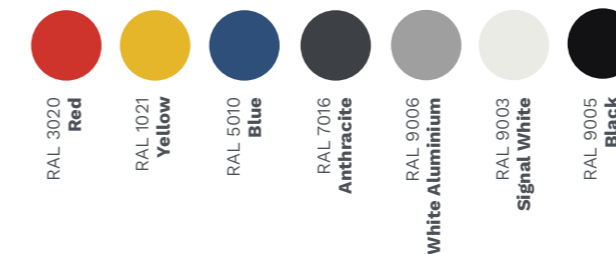
- / Variety of refrigerant options: R455A, R452A, R448A, R449A
- / CO<sub>2</sub> option
- / Alternative brand electronic controller
- / Electronic expansion valve
- / Ball valves & Solenoid valves
- / Electric night blind
- / Tilted shelf risers
- / Additional shelving
- / Stepped shelf risers
- / Alternative bumper options
- / Vertical lighting in end walls
- / Glass or solid ends

Module	Width*	Depth	Height	TDA m <sup>2</sup>	Power
1,25	1250mm	750mm	1595mm	2.33m <sup>2</sup>	230V / 50Hz
2,50	2500mm	750mm	1595mm	3.78m <sup>2</sup>	230V / 50Hz
3,75	3750mm	750mm	1595mm	5.24m <sup>2</sup>	230V / 50Hz

Based on Glass End Walls

TDA (Total Display Area)  
\*Width **excludes** end walls (40mm each)

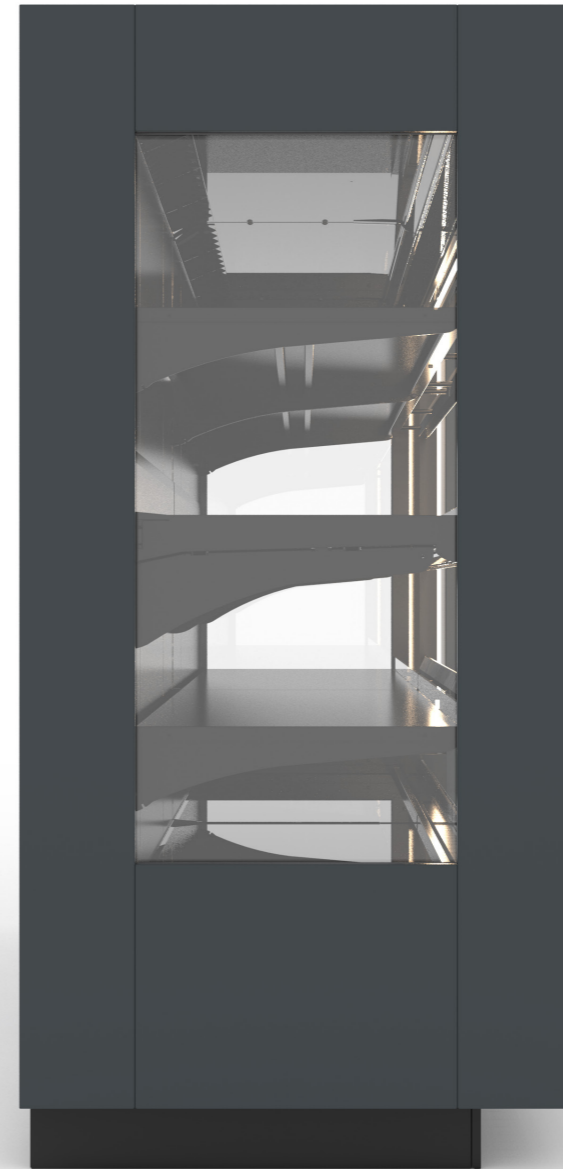
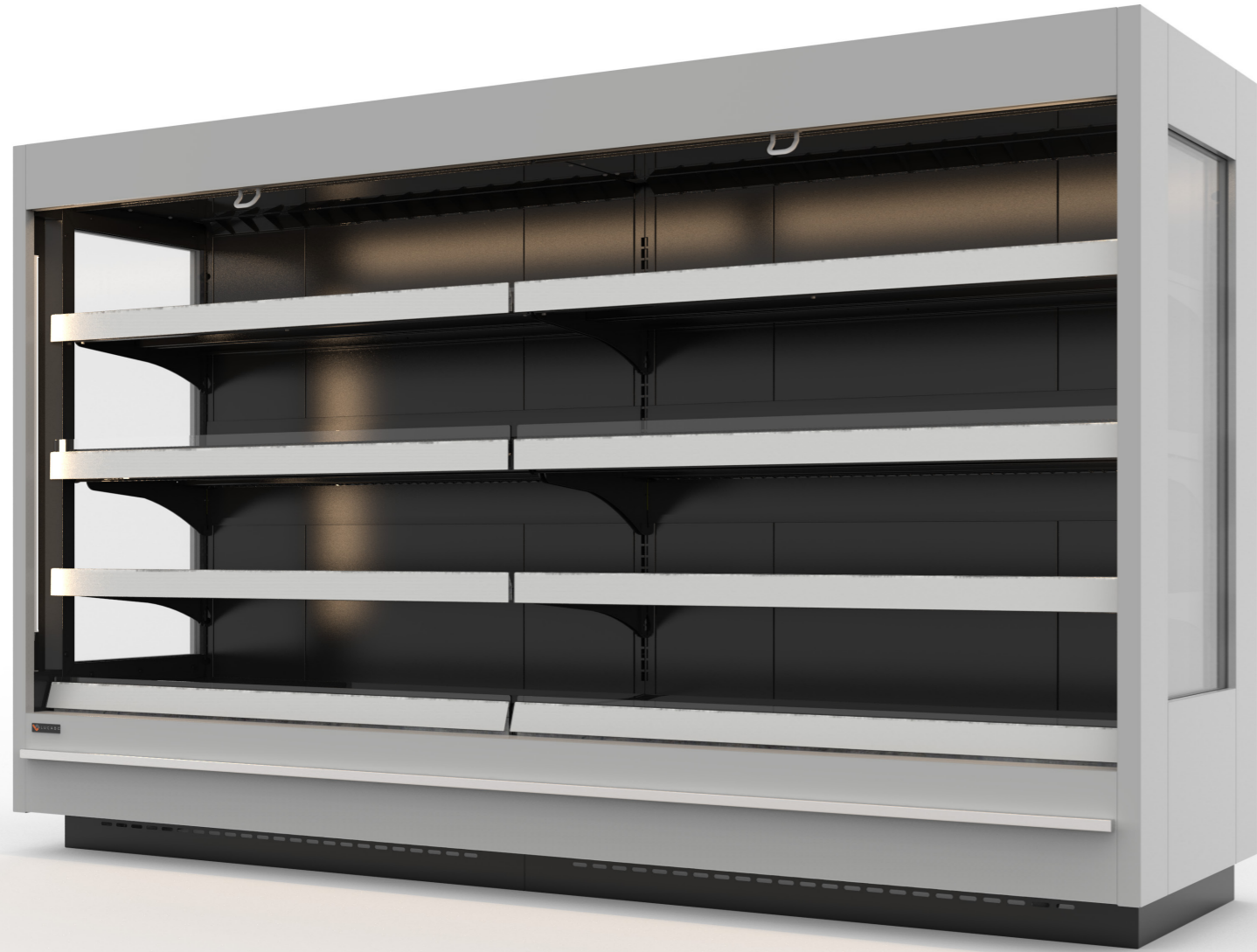
## Standard Colour finishes



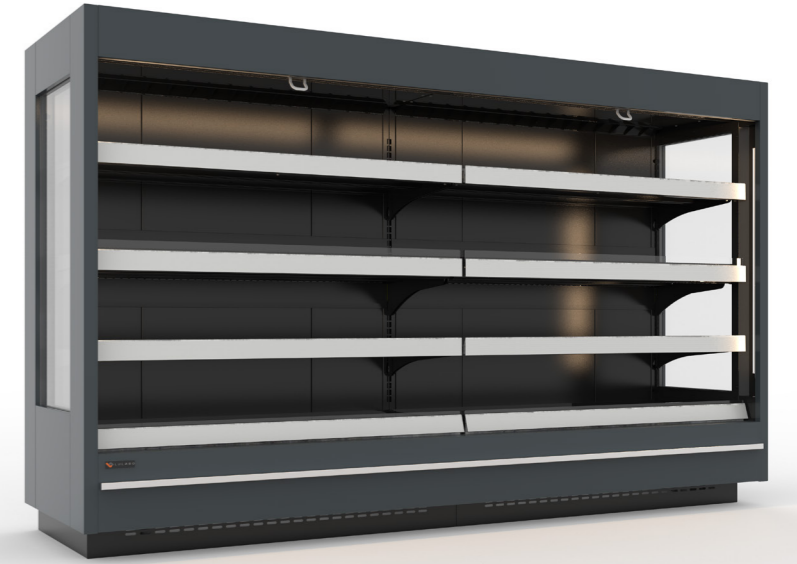
**Optional Customisation**  
Any RAL Colour

**Coming Soon...**  
Additional height options of 2020mm and 2250mm

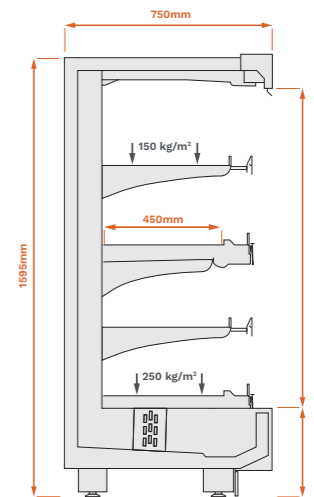
aero Remote 2500mm x 1595mm



aero Remote 2500mm x 1595mm



### Diagrams





aero Remote 3750mm x 2225mm

aero  
**Remote** 895mm deep

Powered by  
**Aircell**



**Refrigerant**  
Wide selection of refrigerants available



**Temp. class/range**  
3M1 (-1 ÷ +5°C)



**Climate Class**  
3 (25°C, 60% RH)

### Specification

- / Remote cabinet
- / Aircell patented ventilation system
- / Manual nightblind
- / Adjustable shelving\*
  - / 3 Tier plus base (1595mm high)
  - / 4 Tier plus base (2020mm high)
  - / 5 Tier plus base (2250mm high)
- / POS price rails
- / Perspex risers
- / Horizontal LED canopy lighting
- / Electronic controller
- / EC evaporator fans
- / Expansion valve
- / Off cycle defrost
- / Multiplexable

\*Aircell shelves can move one position upwards or downwards.

### Options & Accessories

- / Variety of refrigerant options: R455A, R452A, R448A, R449A
- / CO<sub>2</sub> option
- / Alternative brand electronic controller
- / Electronic expansion valve
- / Ball valves & Solenoid valves
- / Electric night blind
- / Tilted shelf risers
- / Additional shelving
- / Stepped shelf risers
- / Alternative bumper options
- / Vertical lighting in end walls

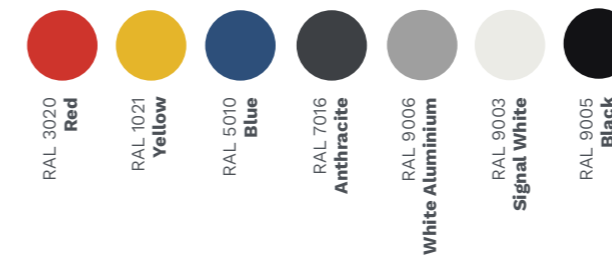
Module	Width*	Depth	Height	TDA m <sup>2</sup>	Power
<b>1,25</b>	1250mm	895mm	2020mm	3.67m <sup>2</sup>	230V / 50Hz
<b>2,50</b>	2500mm	895mm	2020mm	5.66m <sup>2</sup>	230V / 50Hz
<b>3,75</b>	3750mm	895mm	2020mm	7.65m <sup>2</sup>	230V / 50Hz

Module	Width*	Depth	Height	TDA m <sup>2</sup>	Power
<b>1,25</b>	1250mm	895mm	2250mm	4.21m <sup>2</sup>	230V / 50Hz
<b>2,50</b>	2500mm	895mm	2250mm	6.49m <sup>2</sup>	230V / 50Hz
<b>3,75</b>	3750mm	895mm	2250mm	8.77m <sup>2</sup>	230V / 50Hz

Based on Glass End Walls

TDA (Total Display Area)  
\*Width **excludes** end walls (40mm each)

### Standard Colour finishes



**Optional Customisation**  
Any RAL Colour



**Coming Soon...**  
Additional height option of 1595mm



Diagrams

